

# Glazed Porcelain Tiles- IP

*Series*

**Latest 2015**

**FOTO CERAMICA**

F:86-757-85391520  
<http://fototiles.en.alibaba.com>  
[www.fotoceramics.com](http://www.fotoceramics.com)

IP6001

IP6002

IP6003

IP6004

IP6005

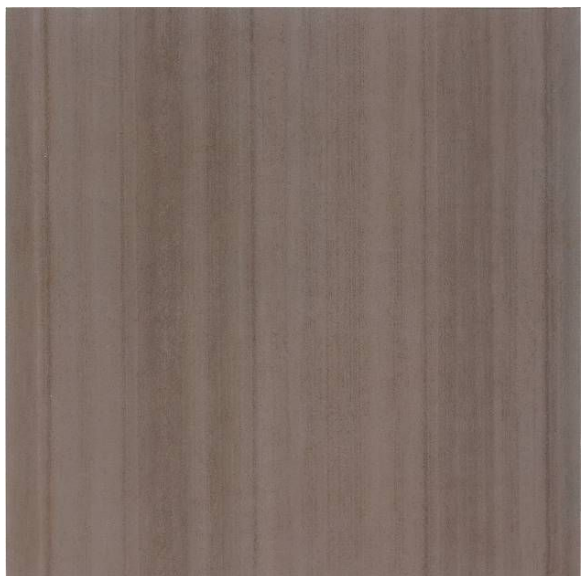
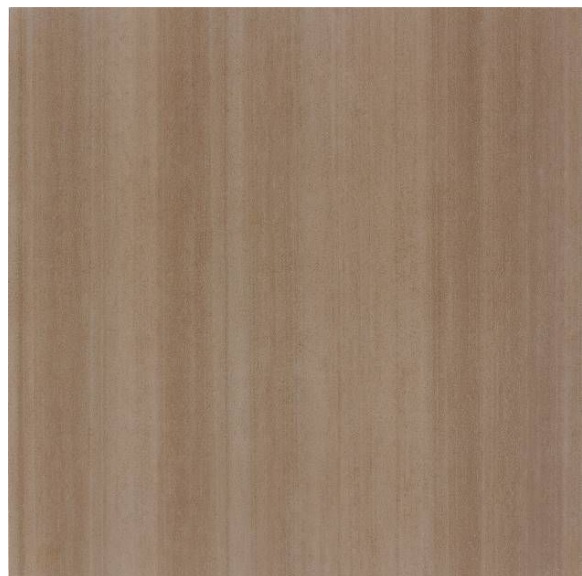
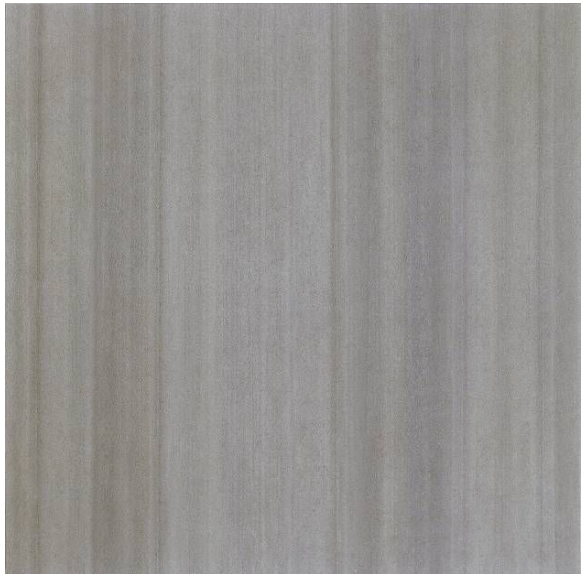
IP6006



IP6001 24" x 24" / 60 x 60 cm

IP6003 24" x 24" / 60 x 60 cm

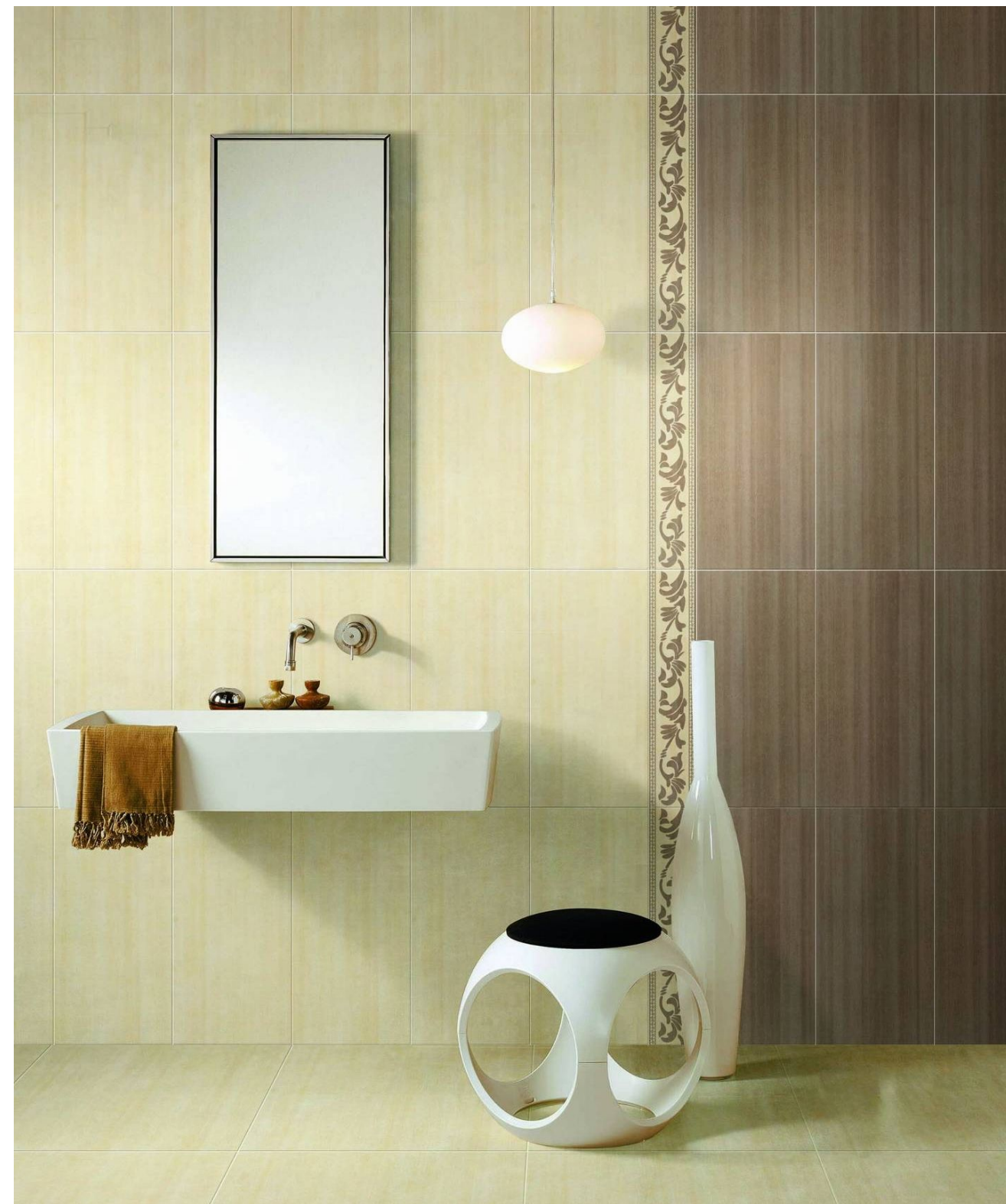
IP6004 24" x 24" / 60 x 60 cm



IP6002 24" x 24" / 60 x 60 cm

IP6005 24" x 24" / 60 x 60 cm

IP6006 24" x 24" / 60 x 60 cm









# PACKING LIST

SIZE(CM)	PC S/BOX	KGS/BOX (G.W.)	PLT(box/pallet) 80X120cm	PLT(box/pallet) 92x120cm	PLT(box/pallet) 100x100cm	PLT(box/pallet) 105x105cm	21TON/CNT	24TON/CNT	27TON/CNT	MEMO
60X120X1.1	2	36	44				572	660	726	
20X120X1.1	5	30	39				680	780	878	
60X90X1.1	3	39.5	36		36		522	594	666	
30X90X1.1	5	33		36			570	594	800	
20X90X1.1	6	26.5		45			765	880	900	
15X90X1.1	8	26.5		48			768	888	1008	
80X80X1.1	3	48	27		24		432	486	550	
40X80X1.1	4	32.5	42		40		625	720	820	
60X60X0.95	4	31.5	32		32		680	752	832	
30X60X0.95	8	31.5	32		32		680	752	832	
15X60X0.95	11	21.5	48		48		1008	1080	1224	
10X60X0.95	16	21	48		48		1008	1104	1248	
5X60X0.95	33	21.5	48		48		1008	1080	1224	
7.5X6X0.95	22	21	48		48		1008	1104	1248	
30X30X0.95	13	25.5	40			46	800	920	1040	
30X30X0.95	13	23.5	30			36				QQ#FULL CUT
28.6X37.5X0.95	11	18	36			48				QQ#FULL CUT
30X30X0.95	13	25.5	40			46				BQ#HALF CUT
30X60X0.95	8	30.5	32			32				BQ#HALF CUT
30X83X0.95	8	28.5	30			30				QQ#FULL CUT

# RECTIFIED PORCELAIN STONE

	NORM	STANDARD	IP
SIZE	Length/width thickness surface flatness	0.6% 5% 0.50%	±0.20% ±2% ±0.20%
Water absorption	ASTM TESTC373	0.50%	0.3%
Bending strength		35N/mm <sup>2</sup>	38N/mm <sup>2</sup>
Hardness	MOSH	6	6
Abrasion		≤175mm <sup>3</sup>	≤145mm <sup>3</sup>
Resistance to acids/alkalies	ASTMC650	NO VISIBLE EFFECT	NO VISIBLE EFFECT
Resistance to thermal shock	ASTMC484	NO VISIBLE ALTERATIONS	NO VISIBLE ALTERATIONS
Slip resistance		WET-0.60	WET-0.60
Frost resistance	ASTMC1026	NO BREAKS FOR VISIBLE EFFECT	NO BREAKS FOR VISIBLE EFFECT